

Sight Glass Fittings acc. to DIN 28121
to be *mounted* to existing DIN-flanges
with **Safety** double windows

NORIS

Bauform 121-D

Application:

NORIS-Sight glasses acc. to DIN 28121 are equipped with a double glass system. Every single glass plate resists the design pressure, so in case of failure of one plate the other plate will stay the complete system pressure without leakage and guarantees the function of the system. Sealing is realised by a O-ring system between the flanges.

Operating conditions:

Working pressure: 10 bar or 25 bar
Working temperature: 200°C or 150°C

Option:

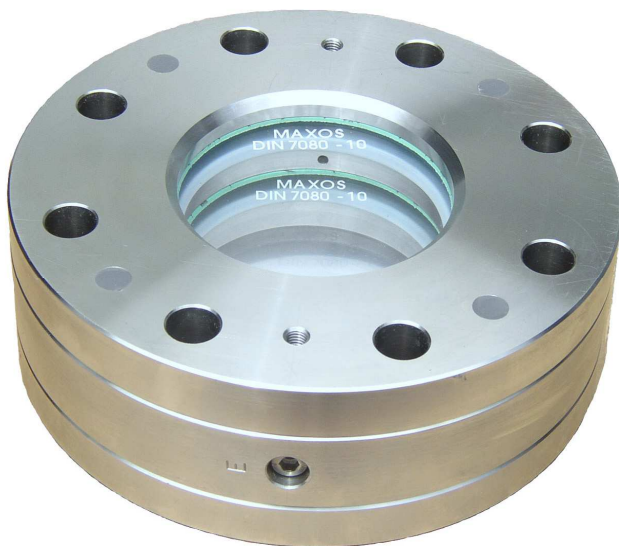
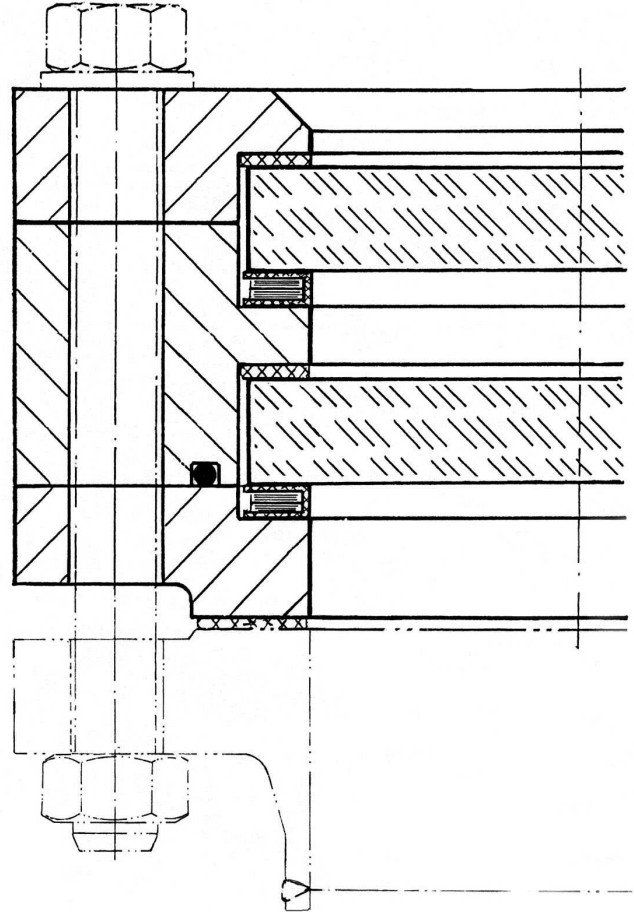
Flanges can be supplied with special facings
Heating unit against fog
Base-flange lined
Special design for more than 200°C
Sight glass light fittings
ANSI-connection

Materials and Dimensions:

see our datasheet Bauform 121

Certificate: (Option)

Acc. to EN 10204-2.2 or
Acc. to EN 10204-3.1



Modifications reserved

NORIS ARMATUREN Burkenstein GmbH & Co. KG

Puscherstrasse 3
D-90411 Nürnberg

Telefon: +49 (0) 911 / 52 150 63
Telefax: +49 (0) 911 / 52 24 40

Internet: Noris-Armaturen.de
E-Mail: Noris@Noris-Armaturen.de