

# Hydraulic Clamp Nut

## Piston system

# NORIS

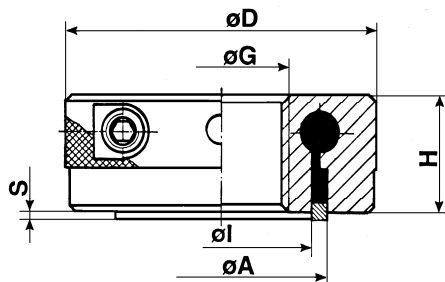
## Series N11.02-DA

### Features of series with - DA

**Pressure indicator**  
**Tangential operating**  
**with Allen key**  
**Medium remains into the system**



The actuator screws has to be turned into the body by using the enclosed Allen key.  
 The internal medium will flow into the circular groove and raise the ring piston.  
 With less manual force you create a big hydraulic clamping force.  
 For to relieve the clamp nut put the actuator screws to the start position  
 and move the nut to the opposite direction.  
 The medium remains into the system.



**Clamping range 2 mm**

Thread $\varnothing G_{max.}$	Ring piston		Outer Diameter $\varnothing D$	Height H	Clamping force (achieved by hand) in kN	Part No Clamping range S 2 mm
	$\varnothing A$	$\varnothing I$				
42	65	55	92	35	80	111.02.042-DA
52	84	72	108	35	130	111.02.052-DA
68	92	82	118	35	120	111.02.068-DA
80	110	100	132	40	150	111.02.080-DA
100	125	110	160	40	190	111.02.100-DA
120	150	135	195	50	140	111.02.120-DA
140	175	155	210	55	220	111.02.140-DA
160	200	180	240	55	210	111.02.160-DA
180	222	202	255	55	230	111.02.180-DA

Against corrosion our hydraulic clamp nuts are protected with a brown finish.  
 The standard sealing systems are suitable for temperatures up to 80°.  
 The ring piston is locked against drop out.

Special design of hydraulic clamp nuts on request

# NORIS

## ARMATUREN BURKENSTEIN GMBH & CO. KG

– ABTEILUNG SPANNELEMENTE –

D-90411 Nürnberg  
 Puscherstraße 3

Telefon: + 49 (0) 911/ 52 15 06 3  
 Telefax: + 49 (0) 911/ 52 24 40

E-Mail: [noris@noris-armaturen.de](mailto:noris@noris-armaturen.de)  
 Internet: [www.noris-armaturen.de](http://www.noris-armaturen.de)