

Sight Flow Indicators (straight line) with *DIN* - flanges

NORIS

Bauform 112

Application:

Sight Flow Indicators are used for optical control and the observation of filling and current in pipelines. Without rest fluid in the body in horizontal installation.

Operating conditions:

Working pressure : 16 bar
Working temperature: 150°C or 280°C

Installation:

Optional

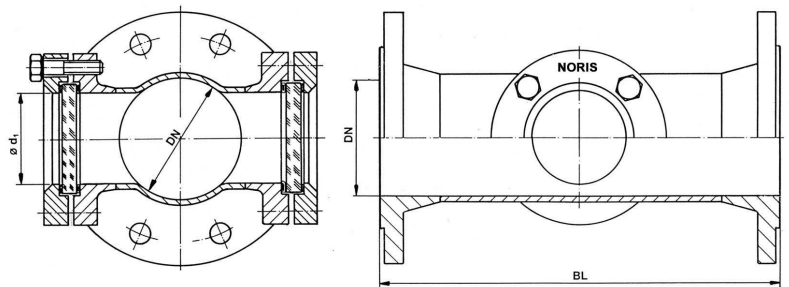
Options:

Flanges in ANSI
Light-fitting
Extra length
Body in steel

Materials:

Body	WN 1.4571 or 1.4404
Covers	Stainless steel
Screws	A4-70
Glass	Borosilicate glass acc. to DIN 7080 Soda lime glass acc. to DIN 8902
Gasket	Graphite; (or other materials)

Without rest fluid
in the body



Ordering example:

Sight flow indicators Bauform 112
Body: WN 1.4571; Borosilicate glass
DN 100 PN 16



Dimensions:

DN	BL	ø d ₁	Glass Ød x S
25	160	23	45 x 10
40	200	39	63 x 10
50	230	44	63 x 10
80	310	64	80 x 12
100	350	80	100 x 15
125	400	80	100 x 15
150	480	100	125 x 20
200	600	125	150 x 25
250	730	150	175 x 25
300	850	150	175 x 25
350	980	150	175 x 25
400	1100	150	175 x 25

Modification reserved

NORIS ARMATUREN Burkenstein GmbH & Co. KG

Puscherstrasse 3
D-90411 Nürnberg

Telefon: +49 (0) 911 / 52 150 63
Telefax: +49 (0) 911 / 52 24 40

Internet: Noris-Armaturen.de
E-Mail: Noris@Noris-Armaturen.de